

lux velocitas

lighting to the point



LUX SCREEN PRODUCT ATTRIBUTES

Size and power

Unit:mm

Product size: 15.6" 21.5"



Consumption: **45w**
Weight: **18kg**

Consumption: **60w**
Weight: **26kg**

Consumption: **45w**
Weight: **28kg**

Consumption: **60w**
Weight: **38kg**

KEY FEATURES



wifi/RJ45



Full HD 1080P



Android



4G (optional)



CMS



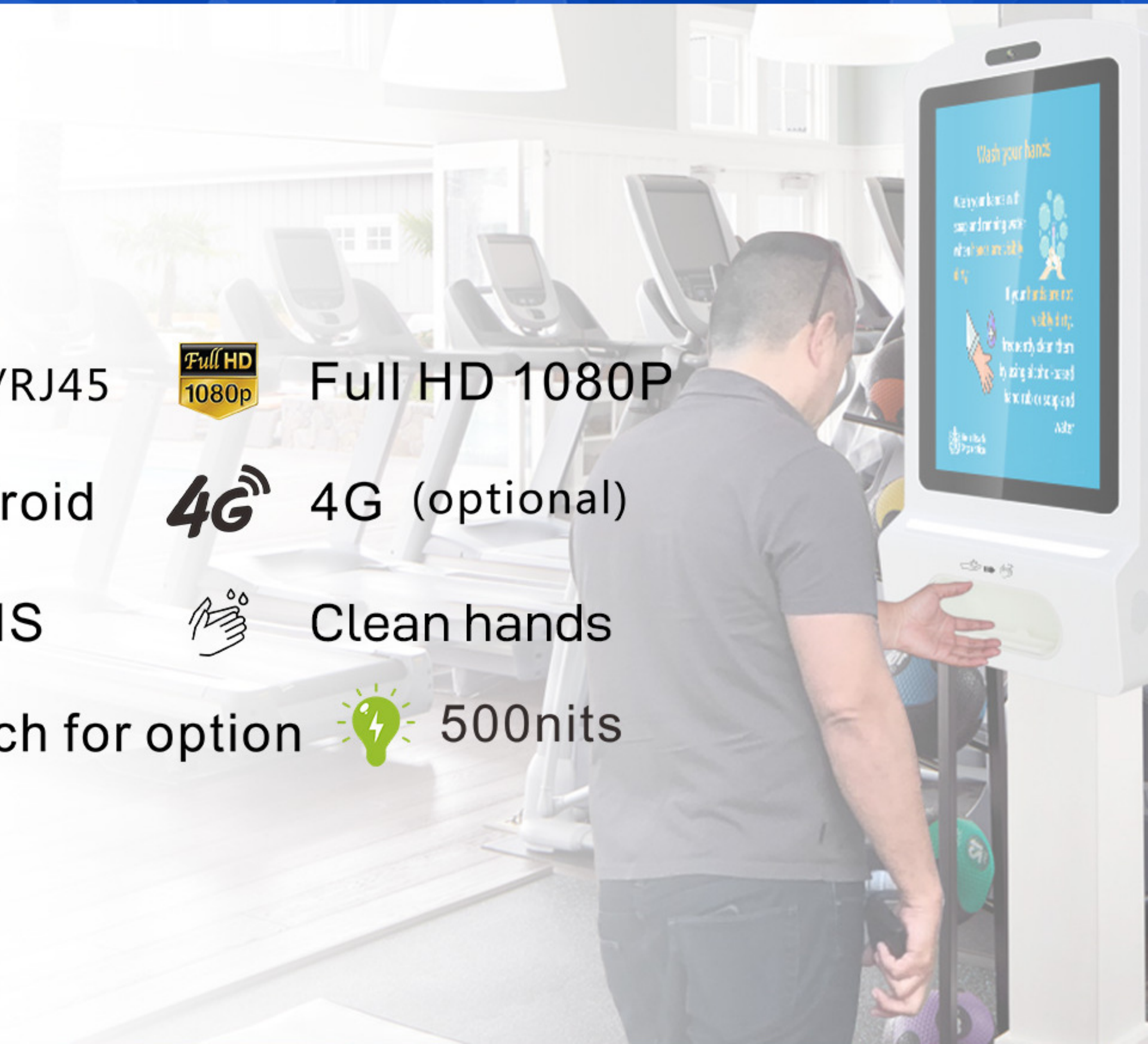
Clean hands



Touch for option



500nits



TOUGHENED GLASS

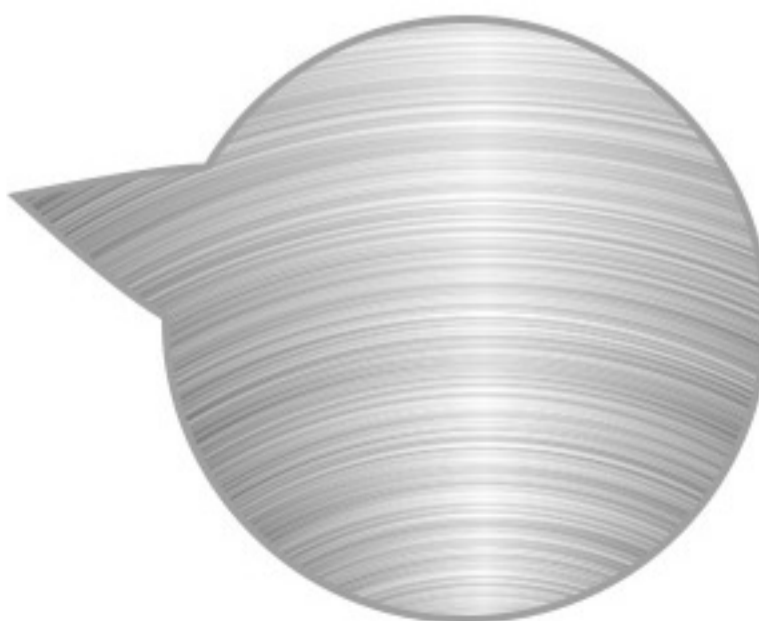
Waterproof, explosion-proof, stronger than plastic case, use for longer

Thickness of tempered glass: **3mm**



Waterproof

Explosion-proof



Fully metal case

LIGHT SIGNALS

Light signals indicate liquid status - medium (green), empty (red)



THE SENSOR

Auto-Dispenser



①

The border color shows blue when not in use

②

The color of the border shows green when reaching in (3 seconds for missing hand sanitizer)



③

Rub your hands outside after dropping the liquid sanitizer.
The border color is blue.



PRODUCT FEATURES



Camera Option
(For security, Body Temperature Etc)



Battery (option)



15.6" -2500ml
21.5" - 5000ml



HOW TO ADD HAND SANITIZER



① Open the machine →



② Container for hand sanitizer ↓



④ Types of hand sanitizer (liquid / alcohol / gel) ←



← ③ open the cover

THE REMOTE CONTROL

Software that can monitor the disinfectant capacity remotely (optional)

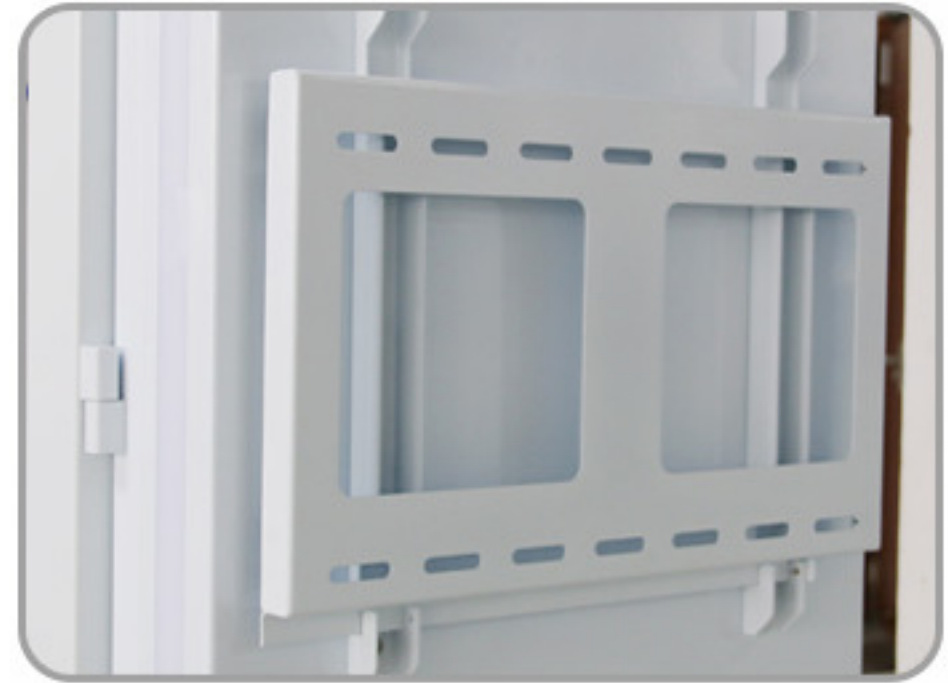
Can monitor disinfectant capacity



CMS Broadcast management

FREESTANDING AND WALL MOUNT (OPTION)

Details of wall hanging and vertical mounting drawings



Wall Mounting



Floor Standing

APPLICATION

VARIOUS SCENARIOS ARE AVAILABLE

----- sales hall, cinema, automobile exhibition hall, bank, shopping center, hotel, hospital... -----



Bar



Museum



Airport Station



Amusement park



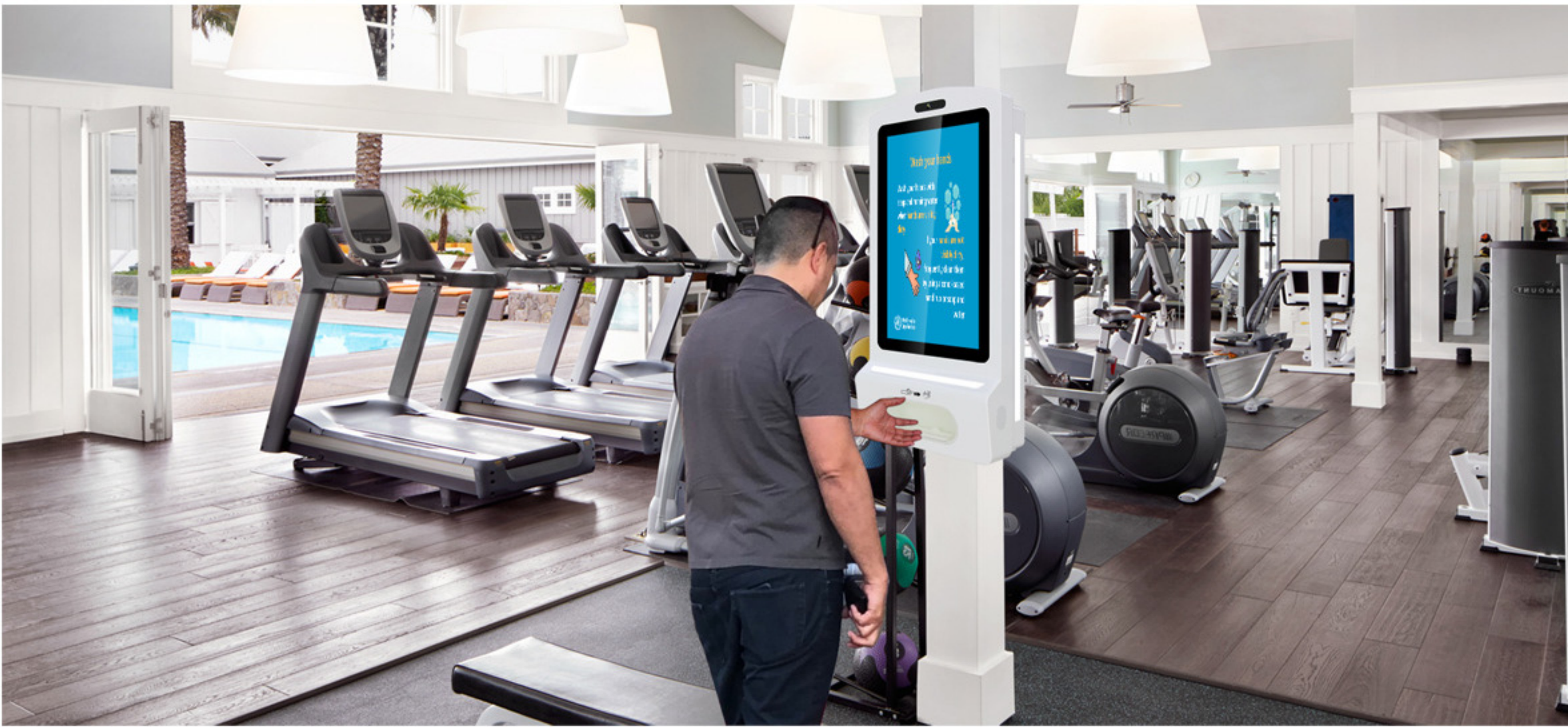
Fast food restaurant



Shopping center

SOME FEEDBACK FROM OUR CUSTOMERS

WE GUARANTEE 100% CUSTOMER SATISFACTION.



lux velocitas

lighting to the point

